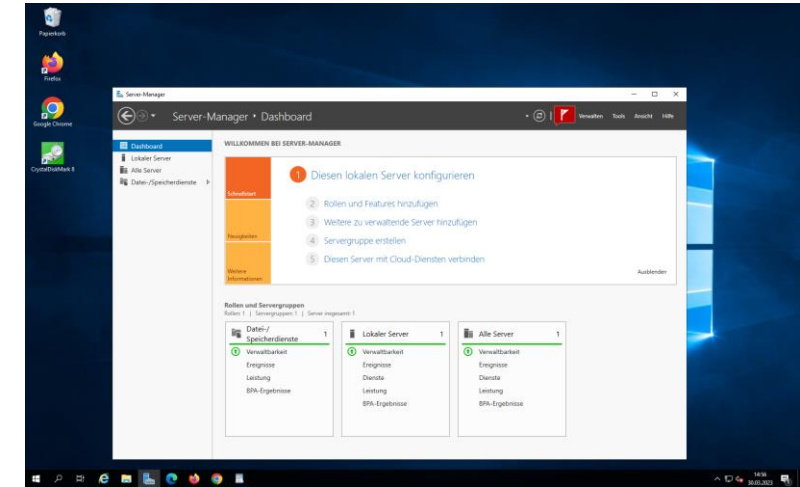


# Dell PowerEdge R230 mit Windows Server 2019 Standard




## Testumgebung: Dell PowerEdge R230

Intel Xeon E3-1240 v6 quad Core (4 cores) @ 3.7 – 4.1 GHz CPU  
Matrox Graphics G200eR (Renasas) WDDM 2.0 GPU  
32 GB RAM @ 2400 MHz ECC- 2x 16 GB DDR4-2400 UDIMM ECC  
Optical Drive: Slim 9.5 mm SATA DVD+/-RW drive  
DELL PERC H330 RAID Controller  
iDRAC8 Express mit Lifecycle Controller  
4x Hot-Swap-fähige 3,5-Zoll-Laufwerke  
2x 480 GB SSD Samsung PM1633a Enterprise SAS - RAID 0  
2x 1 TB HDD Enterprise SATA 6Gbit/s - RAID 0  
2x 1GbE Broadcom RJ45 Ports, 2x 10GbE Intel X520-DA2 SFP+ Ports  
Windows Server 2019 Standard / Azure ARC-enabled Server  
Web-Browser: Chrome, Edge und Mozilla Firefox




Windows Server Manager Dashboard



CrystalDiskMark 8.0.4 x64 [Admin]			
Datei Settings Profile Theme Hilfe Sprache(Language)			
All	5	1GiB	C: 5% (44/893GiB)
			MB/s
	Read (MB/s)	Write (MB/s)	
SEQ1M Q8T1	1931.38	1265.25	
SEQ1M Q1T1	1434.02	1215.18	
RND4K Q32T1	516.65	471.74	
RND4K Q1T1	35.24	77.81	

2\* 480 GB SSD Enterprise SAS (OS-Disk)



CrystalDiskMark 8.0.4 x64 [Admin]			
Datei Settings Profile Theme Hilfe Sprache(Language)			
All	5	1GiB	D: 0% (0/1862GiB)
			MB/s
	Read (MB/s)	Write (MB/s)	
SEQ1M Q8T1	417.97	323.18	
SEQ1M Q1T1	412.71	391.97	
RND4K Q32T1	3.25	2.40	
RND4K Q1T1	0.75	2.25	

2\* 1 TB HDD Enterprise SATA (Data-Disk01)