

# Windows 11 Pro Version 23H2 auf Dell Precision 3650 Tower



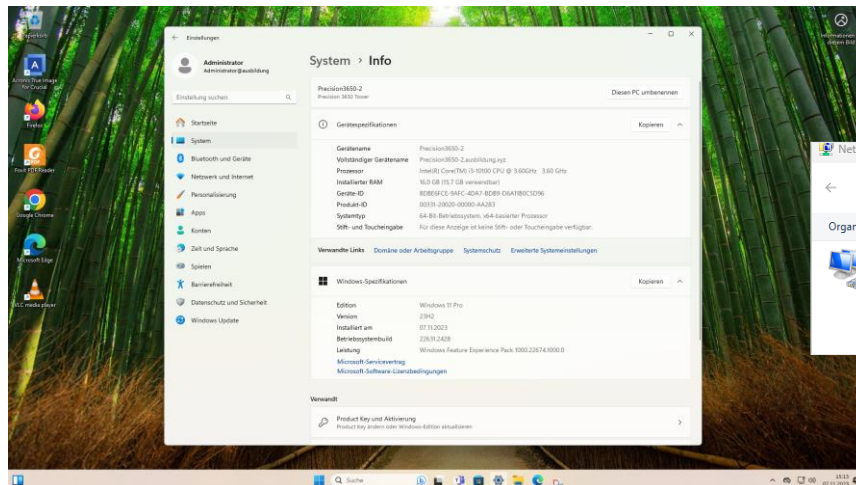
## Testumgebung: Dell Precision 3650 Tower

Intel Core i3 10100 quad-core (4 cores) @ 3.6 - 4.3 GHz CPU  
Intel UHD Graphics 630 - 2x DisplayPort: 4096 x 2304 (4K-Auflösung)  
NVIDIA Quadro P620 GPU, 2GB GDDR5, 1253MHz, 128bit, 4x 4K-Auflösung  
16 GB RAM @ 2933 MHz – 2x 8 GB DDR4-3200 UDIMM  
Speicherkartenleser: SD 4.0 Card Reader  
1x 1 TB SSD Crucial P3 Plus PCIe Gen4 NVMe M.2 mit Heatsink  
1x 1GbE Intel RJ45 Port, 1x 2.5GbE Realtek RJ45 Port  
Windows 11 Pro Version 23H2 (Mitglied in einer lokalen Domain)  
Microsoft 365 Apps for Enterprise (Office Anwendungen)  
Microsoft Teams / Microsoft Clipchamp  
Web-Browser: Chrome, Edge und Mozilla Firefox  
Acronis True Image for Crucial

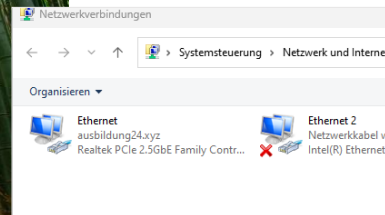
Stop	Read (MB/s)	Write (MB/s)
Stop	3478.00	3080.23
Stop	2548.03	2275.90
Stop	420.10	269.65
Stop	47.70	135.45



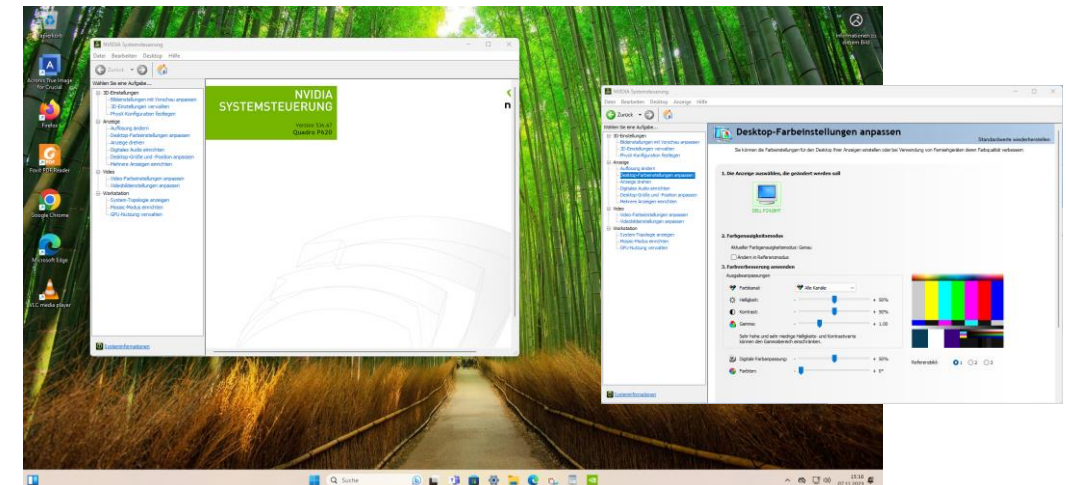
1\* 1 TB SSD Crucial NVMe M.2 (OS-Disk)



Der Windows 11 Pro Version 23H2 Desktop



LAN: 2.5GbE



NVIDIA Systemsteuerung: Quadro P620 Grafikkarte